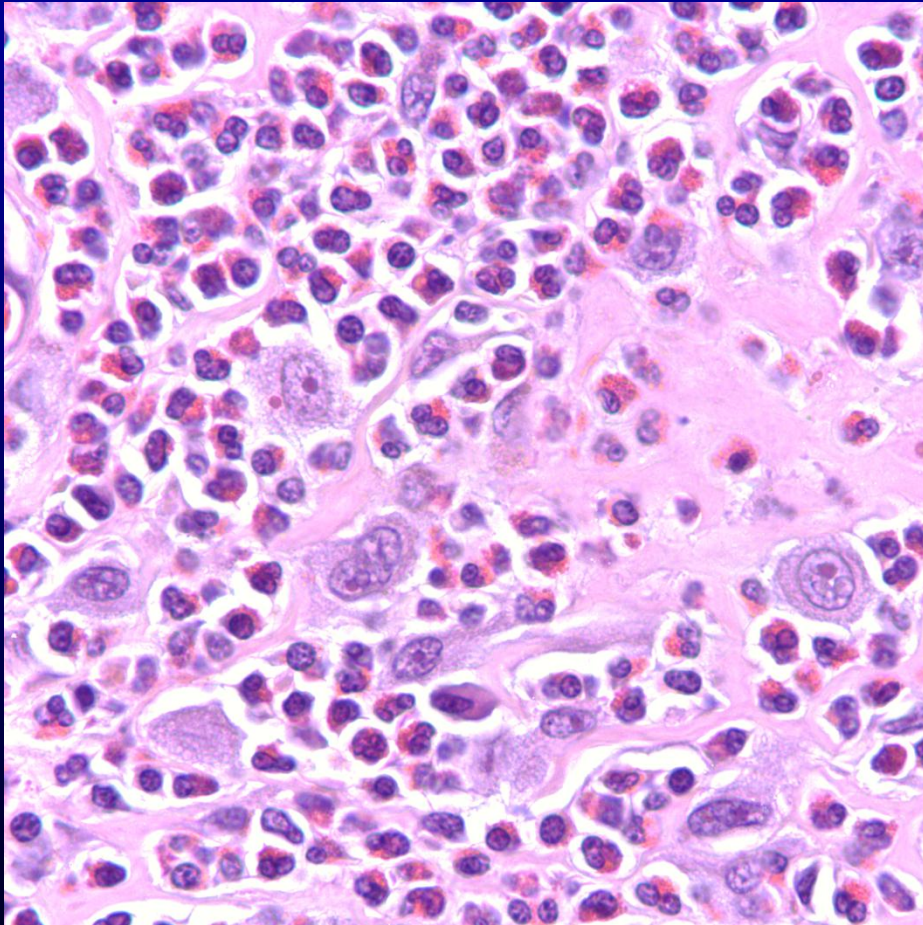


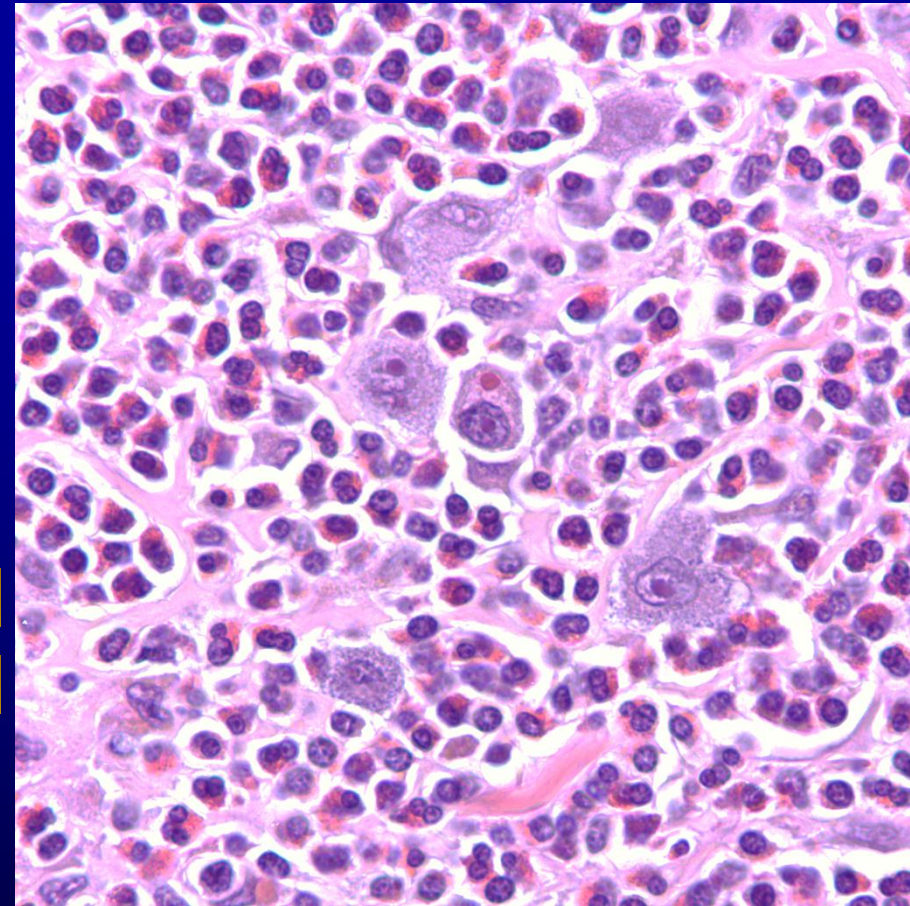
# Cellular Atypia



Anisocytosis

Anisokaryosis

Karyomegaly



## 2-TIER GRADING

- Assessment done in most atypical areas !
- Bizarre nuclei:  $\geq 3/10$  hpf  $\rightarrow$  High grade
- Karyomegaly/anisocytosis:  $> 10\%$   $\rightarrow$  High grade